

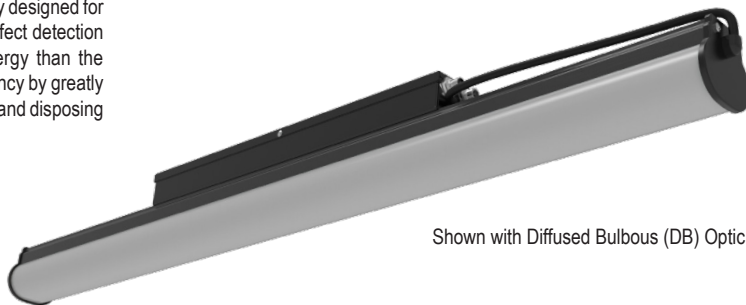


# LEINS5

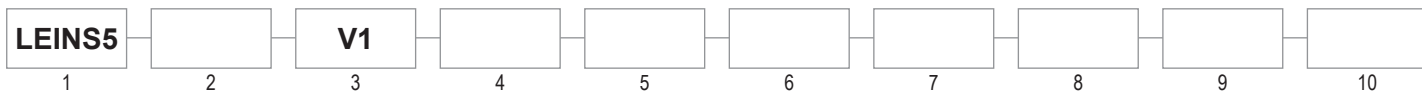
## LED INSPECTION LIGHTING

Paint Inspection • Plastic Inspection • Defect Detection

The LEINS5 is an LED Inspection lighting fixture that was specifically designed for focusing light in a particular direction for inspection and surface defect detection applications. This fixture is capable of saving 50% or more energy than the traditional fluorescent fixture, and has an excellent economic efficiency by greatly reducing maintenance costs while eliminating the need for handling and disposing of hazardous material.



Shown with Diffused Bulbous (DB) Optic



1 SERIES	2 SOURCE*		3 VOLTAGE	4 LENGTH	5 DIMMING	6 OPTIC	7 CCT	8 FINISH*
LEINS5	P4 P8 P12 P16 P20	*See performance table for lumen & wattage outputs	V1: 120-277VAC (50/60Hz)	2: 2 Ft. 4: 4 Ft. 6: 6 Ft. 8: 8 Ft.	Blank: None D1: 0-10V D2: DALI	DR: Diffused Round DB: Diffused Bulbous w/ Ribs	3: 3,000K 4: 4,000K 5: 5,000K 6: 6,500K	B: Black <sup>1</sup> W: White  *Driver Box & Endcaps <sup>1</sup> Standard
9 CORD (POWER)						10 OPTIONS		
Blank: No Cord (Conduit Connection)			CP2: Cord 6 Ft., NEMA L7-15P Plug			EM: Battery/Driver Backup (90 min.)		OC: Occupancy Sensor TF: Through Feed Wiring
CP0: Cord 6 Ft., Blunt End			CP3: Cord 1 Ft., 3 Pole Connector (Through Feed)*			SP: 10Kv Surge Protector		
CP1: Cord 6 Ft., NEMA L5-15P Plug			CP4: Cord 1 Ft., 5 Pole Connector (D2 Only, Through Feed)*			WC: Wireless Control		
*Require additional parts. See Through Feed Cable table.								

### CERTIFICATIONS

UL1598 / CSA 22.2 No. 250.0 (Ordinary)  
Lumen Maintenance (L70): >60,000 hrs. (reported)  
-40°C to 40°C Ambient Rating  
CRI >95

### CONSTRUCTION

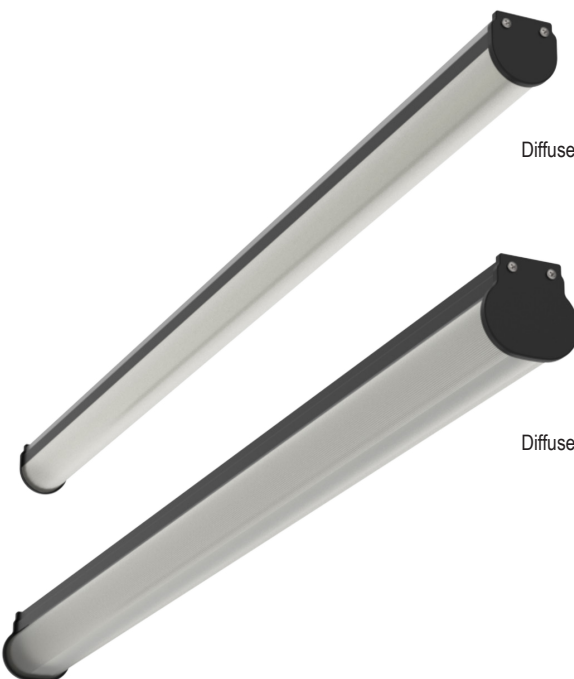
Extruded aluminum housing  
Extruded, diffused acrylic lens  
Powder coat black finish (standard)  
Weights: Length specific, see dimensions drawing

### ELECTRICAL

120-277VAC  
Dimming Options: 0-10V or DALI  
Emergency, battery backup option available

### FEATURES

5 Year Warranty  
Mounting Options: Ceiling, Wall, Cable, Chain, Surface  
(Mounting options ordered separately, field installed)  
Lens designed for topographical defect detection  
Powder coat special: Customer must specify RAL #



Diffused Round (DR) Optic

Diffused Bulbous w/ Ribs (DB) Optic



1-800-854-0021 www.ldpi-inc.com  
LDPI® is a registered trademark of LDPI, Inc. © LDPI, Inc.

Product design and specifications subject to change without notice.  
Visit [www.ldpi-inc.com](http://www.ldpi-inc.com) for the most current version and photometric data. v.06.07.24

# LEINS5

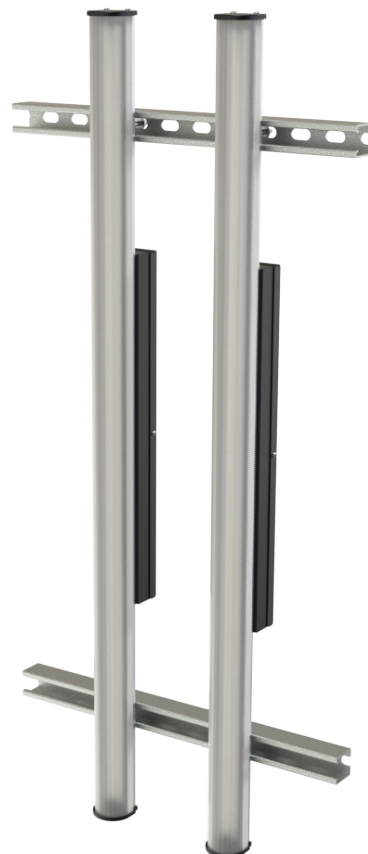
## LED INSPECTION LIGHTING

Paint Inspection • Plastic Inspection • Defect Detection

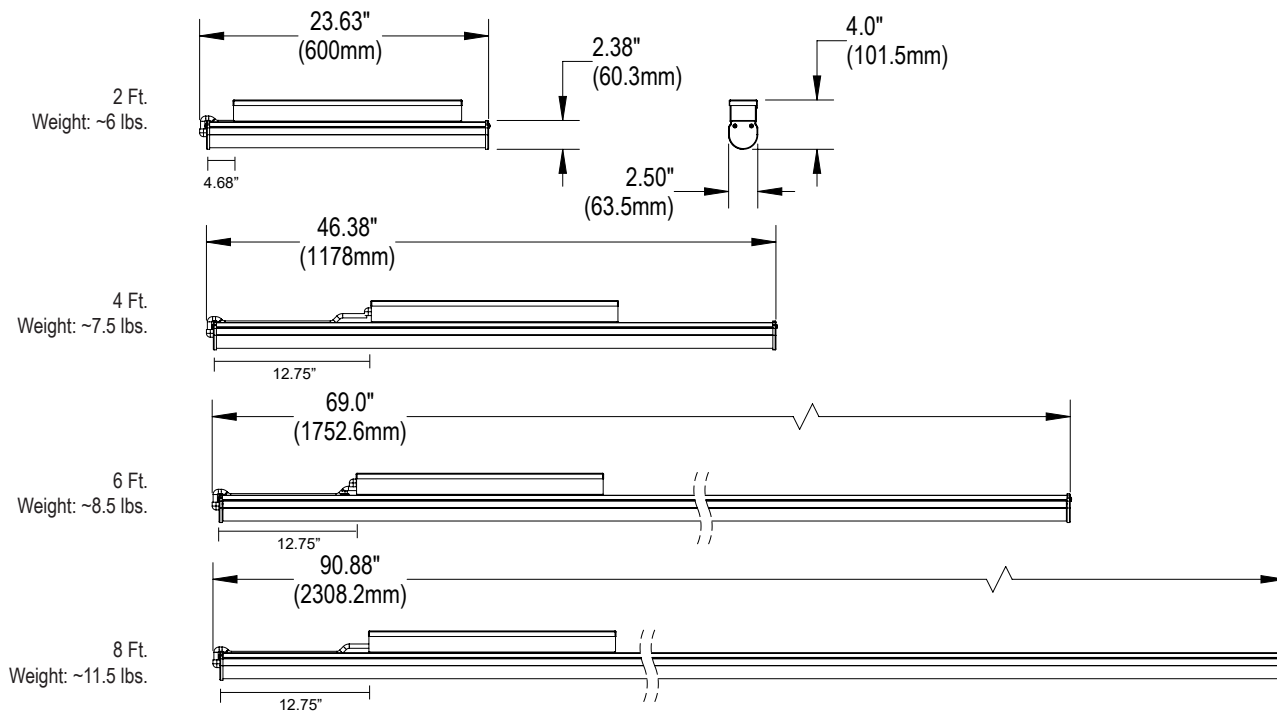


### PERFORMANCE

Source	Length	Voltage (VAC) 50/60Hz	Input Current (A)	Wattage (W)	CCT (K)	Lumen Output DR/DB Optic
P4	2 Ft.	120-277	0.03 - 0.01	4	5,000	475
	4 Ft.		0.07 - 0.03	8		980
	6 Ft.		0.10 - 0.04	12		1475
	8 Ft.		0.20 - 0.09	24		2640
P8	2 Ft.		0.07 - 0.03	8		925
	4 Ft.		0.13 - 0.06	16		1925
	6 Ft.		0.20 - 0.09	24		2915
	8 Ft.		0.27 - 0.12	32		3565
P12	2 Ft.		0.10 - 0.04	12		1390
	4 Ft.		0.20 - 0.09	24		2855
	6 Ft.		0.30 - 0.13	36		4270
	8 Ft.		0.40 - 0.17	48		5350
P16	2 Ft.		0.13 - 0.06	16		1810
	4 Ft.		0.27 - 0.12	32		3765
	6 Ft.		0.40 - 0.17	48		5600
	8 Ft.		0.53 - 0.23	64		7130
P20	2 Ft.		0.17 - 0.07	20		2220
	4 Ft.		0.33 - 0.14	40		4590
	6 Ft.		0.50 - 0.22	60		6500
	8 Ft.		0.67 - 0.29	80		8700



### DIMENSIONS



1-800-854-0021 www.ldpi-inc.com  
LDPI® is a registered trademark of LDPI, Inc. © LDPI, Inc.

Product design and specifications subject to change without notice.  
Visit [www.ldpi-inc.com](http://www.ldpi-inc.com) for the most current version and photometric data. v.06.07.24



# LEINS5

## LED INSPECTION LIGHTING

Paint Inspection • Plastic Inspection • Defect Detection

### MOUNTING (ORDERED SEPARATELY, FIELD INSTALLED)

Part #	Description		Example
18649	Direct Universal Mount Kit (2) 1/4-20 x 2.5" Carriage Bolt (2) 1/4" Flat Washer (2) 1/4-20" Lock Nut		
18650	Cable / Chain Kit Includes hardware and cable eyelets as shown.  Cable/chain not included		
18651	Ceiling / Wall Kit Includes hardware and brackets as shown.		
18652	Surface Kit Includes hardware and brackets as shown.		
<b>Note:</b> Kits shown above <u>DO NOT</u> include the hardware to mount the fixture to the surface or structure.			

### THROUGH FEED CABLES (ORDERED SEPARATELY)

Notes:

Sepearate line item required for all interconnect (through feed) cables

Number of fixtures/cables daisy chained allowed must be calculated due to voltage drop.

Plug	Length	Part Number	Notes	
3 Pole	10 Ft.	17034-10	Requires <b>CP3</b> cord option	
	15 Ft.	17034-15		
	25 Ft.	17034-25		
	50 Ft.	17034-50		
H-Connector		17036		
T-Connector		17305		
5 Pole	10 Ft.	15975	Requires <b>CP4</b> cord option.	
	15 Ft.	16281		
	25 Ft.	15976		
	50 Ft.	15977		
H-Connector		16099		
T-Connector		16217		



1-800-854-0021 www.ldpi-inc.com  
LDPI® is a registered trademark of LDPI, Inc. © LDPI, Inc.

Product design and specifications subject to change without notice.  
Visit [www.ldpi-inc.com](http://www.ldpi-inc.com) for the most current version and photometric data. v.06.07.24


# LEINS5

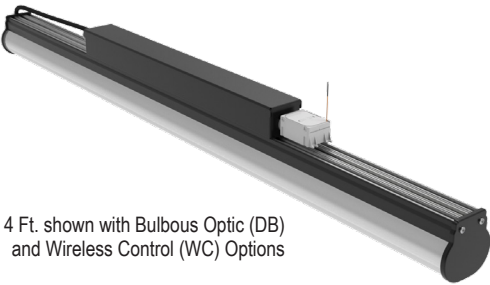
## LED INSPECTION LIGHTING

Paint Inspection • Plastic Inspection • Defect Detection




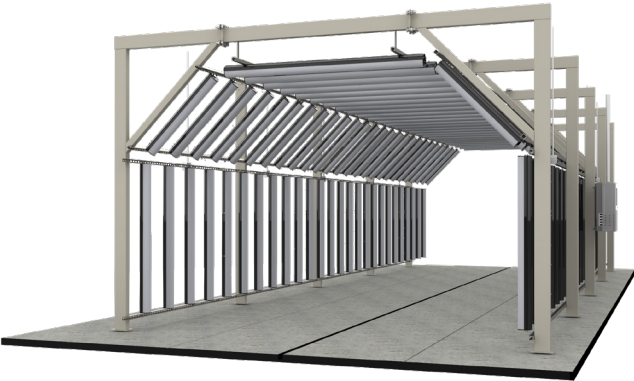
### 0-10V DIMMING CABLES (ORDERED SEPARATELY)

Part #	Length (Nominal)	Connector Type
19492-01	3.3 Ft. (1 M)	 4-Pin M12 Style Connector
19492-02	6.6 Ft. (2 M)	
19492-03	9.8 Ft. (3 M)	
19492-05	16.4 Ft. (5 M)	
19492-10	32.8 Ft. (10 M)	
19492-15	49.2 Ft. (15 M)	



4 Ft. shown with Bulbous Optic (DB) and Wireless Control (WC) Options

### ACCESSORIES AND APPLICATIONS

Application	
Custom cart solutions for portable lighting solutions. Purchased separately. Consult sales with your requirements.	 Examples shown are not LEINS5 fixtures and are shown for reference only.
Inspection tunnels for topographical defect detection. Custom controls options available. Ordered separately. Consult sales with your requirements.	 Example shown is not with LEINS5 fixtures and is shown for reference only.